

Term Paper Glossary

★★★ PLEASE READ ★★★: **Parts 1-3** are provided just to give you some terms to use in your paper in general. **Part 4** is where you will find the **Formal Terms** that you must use to get any credit for the **Formal Analysis section** of your paper. **Illustrations** of various terms are also provided after page two.

Part 1 - Basics

- **BCE** = Before Common Era; equivalent to 'BC'
- **CE** = Common Era; equivalent to 'AD'
 - BC & AD are no longer used in modern academia.
 - CE is not always written, but BCE must be.
 - Centuries always move up, numerically, when used for dates.
 - *Ex: 1805 is in the 19th century, and 2530 BCE is in the 26th century BCE.*
- **Subject Matter**
 - What is visually depicted in art; the objects shown
- **Context**
 - Social environment of art including history, politics, culture, and beliefs that relate to the artist(s) or their work
- **Content**
 - The meaning behind a work of art; its message
- **Fine Art**
 - Art made for the sake of ideas, expression, and beauty
- **Applied Art**
 - Art made for a practical function/purpose
 - Includes **Craft** objects like pottery, woodworking, and traditional folk arts

Part 2 - Style

- **Style**
 - An identifying appearance
- **Representational Style**
 - Depicting recognizable subject matter
- **Realistic Style**
 - Subject matter is made to look as our eyes see in the real world
- **Abstract Style**
 - Depicting recognizable subject matter but not realistically
- **Nonrepresentational Style**
 - Depicting no recognizable subject matter, only formal elements
 - Often just called "abstract," but is actually an extreme form of Abstract Style
- **Idealized Style**
 - Subject matter is made perfect with blemishes and imperfections removed
- **Cultural Style**
 - From a large or distinct geographic area, or cultural/ethnic group
- **Period Style**
 - Determined by dates, usually centuries
- **Movement Style**
 - Group style
- **Individual Style**
 - Of one specific and distinct artist

Part 3 - Media & Technique

- **Sculpture**
 - 3D artwork
- **Casting**
 - Pouring liquid or molten material (metal, acrylic, clay, etc) into a hollow mold to create a 3D object
- **Carving**
 - Removing material from a larger piece
- **Modeling**
 - Adding and shaping materials into a 3D form
- **Drawing**
 - Making marks on a 2D surface
- **Painting**
 - 2D pictures made of pigments suspended in liquid; usually applied with a brush
- **Fresco**
 - Pigments suspended in water and applied to a wall of wet plaster
- **Tempera**
 - Pigments suspended in egg; often on paper or vellum
- **Oil Painting**
 - Pigments suspended in oil; often on wood or canvas
- **Printmaking**
 - Using an inked plate or block to make multiple images; usually on paper

Term Paper Glossary

Part 4 - Formal Terms

When composing your **Formal Analysis** for the Term Paper, please **take your five (5) chosen terms from the list below**.

Use of terms from Parts 1-3 of this Glossary **will not count** towards that aspect of the grading rubric.

- Real line
 - A line that is actually drawn
- Implied Line
 - A line not actually drawn, but form by either a chain of dots/shapes or the edges of other objects/colors
- Contour line
 - A line that goes around something; a border
 - Can be real or implied
- Directional line
 - Points to something for emphasis
 - Can also carry emotional meaning based on direction
- Mass
 - Solid 3D form
 - Can be real or implied
- Volume
 - Hollow 3D form/space
 - Often defined by areas of mass
- Shading
 - Gradation (blurring) of lights and darks
 - Often used to make an image look 3D resulting in Implied Mass
- Chiaroscuro
 - Clear tonal contrasts often used to suggest the volume & modelling of subjects depicted
- Organic Shape
 - An irregularly bounded form
- Geometric Shape
 - A regularly bounded
- Texture
 - The physical feel of the surface
 - Can be real or implied
- Foreshortening (2D)
 - “Rotating” an object within an image to give a more accurate sense of mass and volume
- Diminishing Scale
 - Objects get smaller in the background to show distance
- Perspective
 - The illusion of 3D space on/in a 2D surface
- Linear Perspective
 - Using angled lines that meet at a common vanishing point to show depth
- Atmospheric Perspective
 - Using fading objects in the background to show depth
- Composition
 - How shapes, lines, & color are organized in an artwork
- Rhythm
 - How the eye of the viewer moves through the artwork
- Pattern
 - Something repeated
- Symmetry
 - Visual balance that is equal on each side (mirroring)
 - Both perfect symmetry and implied symmetry are possible
- Asymmetry
 - Visual balance that is unequal on each side
 - As noted above, both perfect and implied asymmetry are also possible
- Proportion
 - Size relationships of parts to a whole within an artwork, body, building, or other contained form/entity
- Scale
 - Refers to the size of an object (a whole) in relationship to another object (another whole)
- Realistic Proportion
 - Size relationships are as they would be in real life
- Hieratic Proportion
 - Size relationships are indicative of relative power and importance
 - Larger objects are important than smaller ones
- Realistic Scale
 - Size is as it would be in real life
- Hieratic Scale
 - Again, size relates to power and importance

Term Paper Glossary

Illustrated Terms - Example images are below each term

Basics

Fine Art



Applied Art



Style

Representational Style



Realistic Style



Abstract Style



Term Paper Glossary

Nonrepresentational Style



Idealized Style



Cultural Style (Navajo)



Period Style (Medieval)



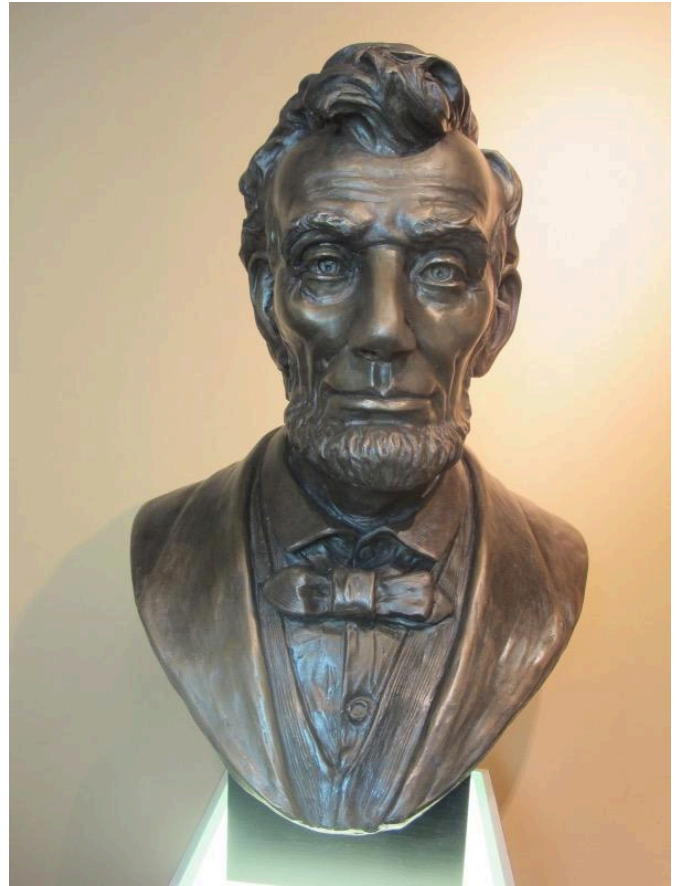
Term Paper Glossary

Movement Style (Cubism)



Media & Technique

Casting



Individual Style (Van Gogh)



Term Paper Glossary

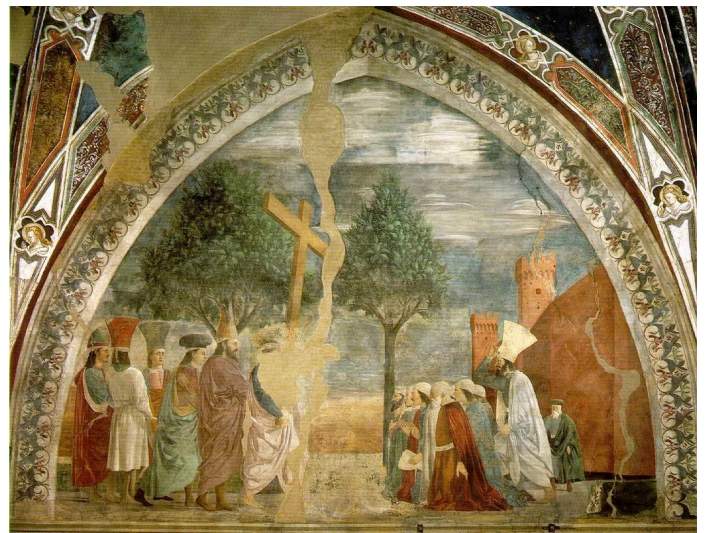
Carving



Drawing



Fresco



Modeling



Term Paper Glossary

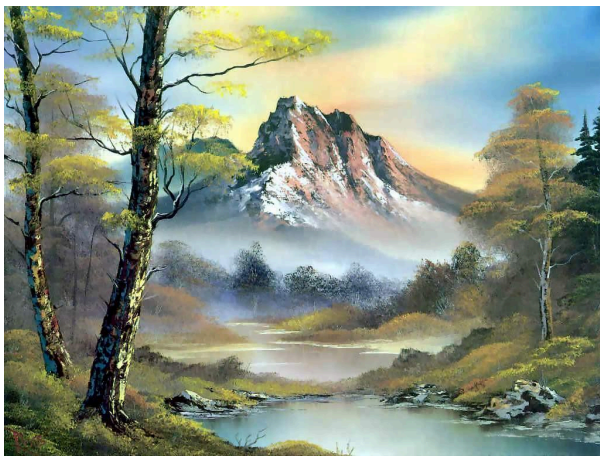
Tempera



Printmaking



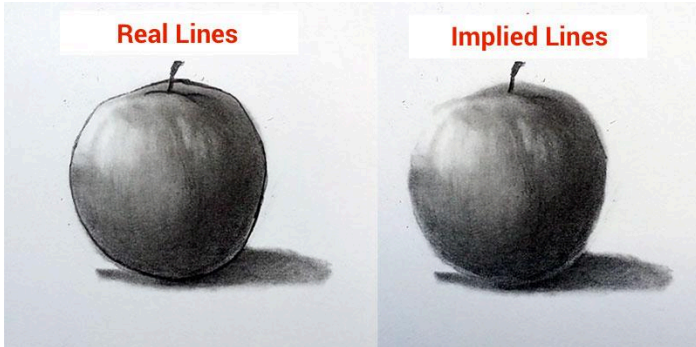
Oil Painting



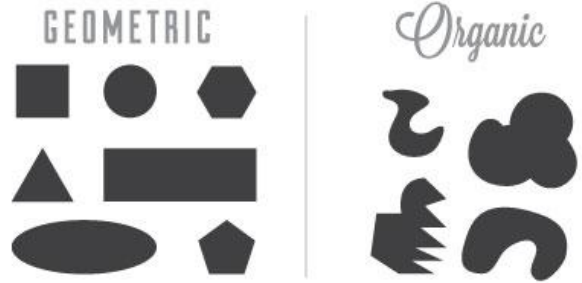
Term Paper Glossary

Formal Terms

Real & Implied lines



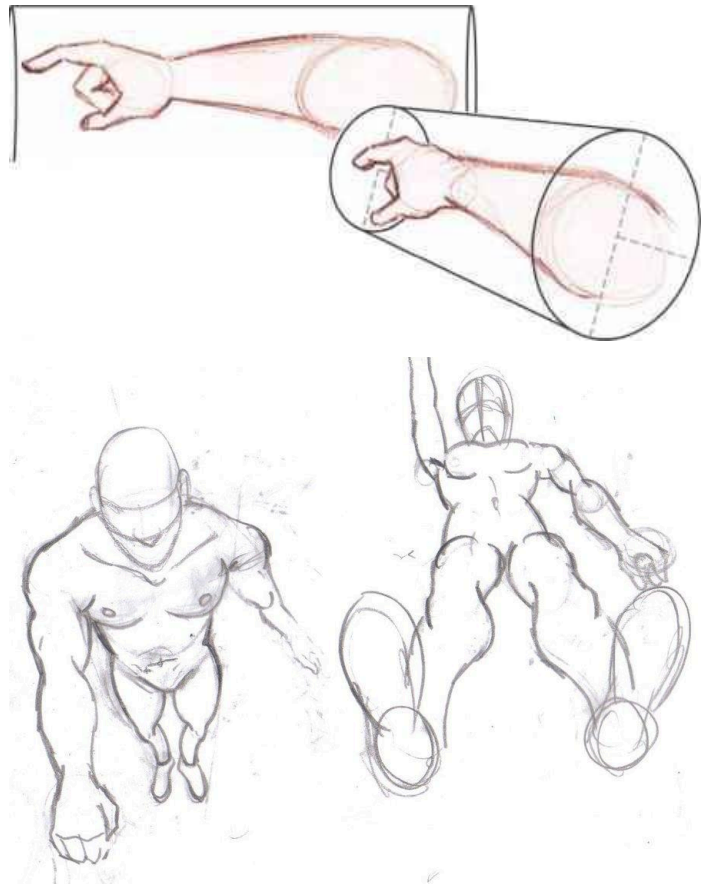
Organic & Geometric Shapes



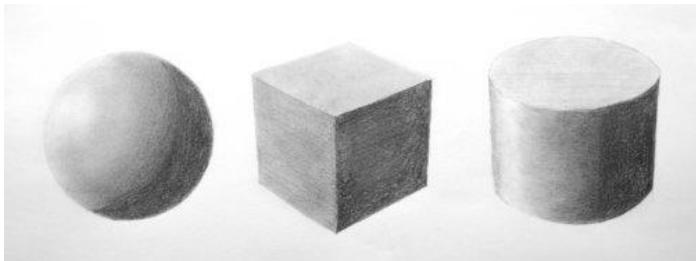
Directional lines



Foreshortening



Shading



Term Paper Glossary

Diminishing Scale



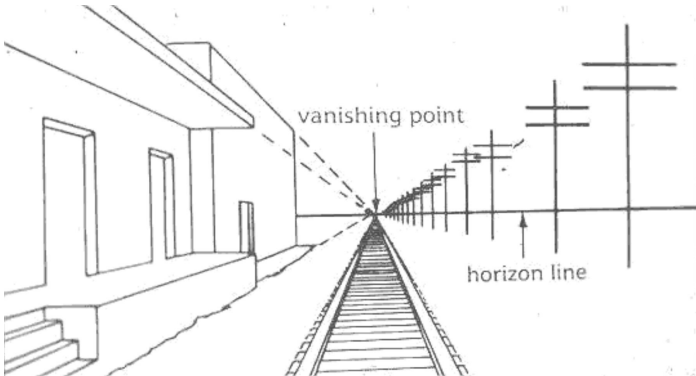
Atmospheric Perspective



Pattern

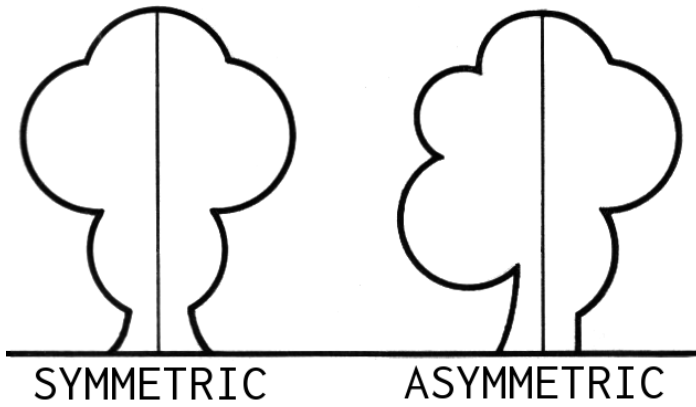


Linear Perspective



Term Paper Glossary

Symmetry & Asymmetry



Hieratic Proportion

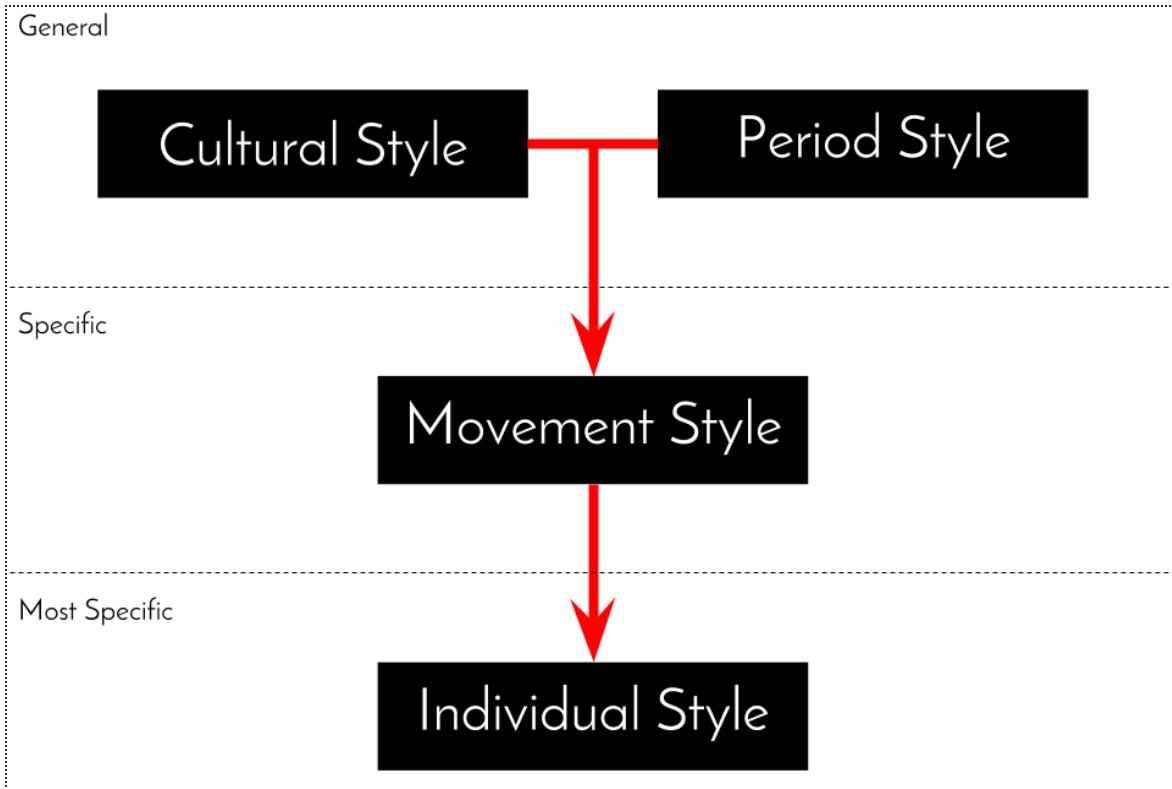


Hieratic Scale



Term Paper Glossary

Hierarchy of Style Categories



Style Terms Describing **Realism** vs **Abstraction**

