

Assignment 4: 3D visualization

10/3/2025

Missing 7 Points Possible

Attempt 1



In Progress

NEXT UP: Submit Assignment



Add Comment

Unlimited Attempts Allowed

Details

Are you ready to start using SketchUp for 3D visualization? This week's assignment requires you to generate a 3D site modeling based on the site plan, using all the SketchUp skills you have learnt in the three workshops.

Previous SketchUp Workshops:





[Week 3 Module 2 Urban Design Development and Value Introduction 3D visualization workshop SketchUp](https://ufl.instructure.com/courses/548511/pages/week-3-module-2-urban-design-development-and-value-introduction-3d-visualization-workshop-sketchup)

(<https://ufl.instructure.com/courses/548511/pages/week-3-module-2-urban-design-development-and-value-introduction-3d-visualization-workshop-sketchup>)

[Week 5 Module 3 Morphological Analysis Workshop SketchUp](https://ufl.instructure.com/courses/548511/pages/week-5-module-3-morphological-analysis-workshop-sketchup) (<https://ufl.instructure.com/courses/548511/pages/week-5-module-3-morphological-analysis-workshop-sketchup>)

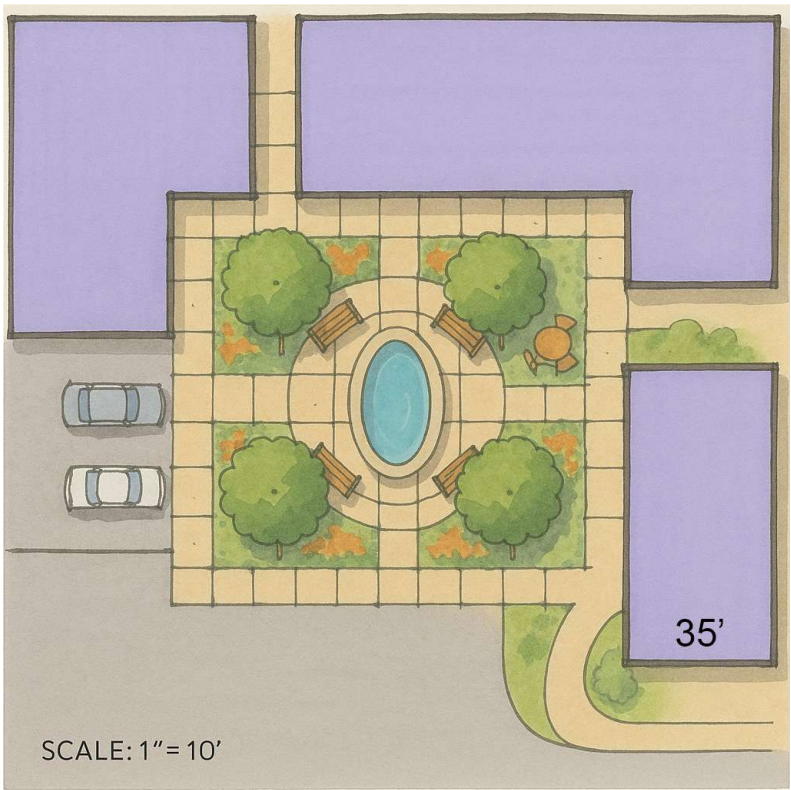
More importantly, please watch all the demo videos in [Week 6 Module 3 3D Visualization Workshop](https://ufl.instructure.com/courses/548511/pages/week-6-module-3-3d-visualization-workshop)

(<https://ufl.instructure.com/courses/548511/pages/week-6-module-3-3d-visualization-workshop>) and download the four skp files below, to understand the workflows and to master the basic tools to create 3D model from a plan sketch in SketchUp.

- Step 1-[import sketch and 2d drafting.skp](https://ufl.instructure.com/courses/548511/files/100268094?wrap=1) (<https://ufl.instructure.com/courses/548511/files/100268094?wrap=1>)_ 
(https://ufl.instructure.com/courses/548511/files/100268094/download?download_frd=1)
(https://ufl.instructure.com/courses/539766/files/96879116/download?download_frd=1)
- Step 2-[finalize 2d drafting and add materials.skp](https://ufl.instructure.com/courses/548511/files/100268095?wrap=1) (<https://ufl.instructure.com/courses/548511/files/100268095?wrap=1>)_ 
(https://ufl.instructure.com/courses/548511/files/100268095/download?download_frd=1)
(https://ufl.instructure.com/courses/539766/files/96879119/download?download_frd=1)
- Step 3-[3d modeling.skp](https://ufl.instructure.com/courses/548511/files/100268101?wrap=1) (<https://ufl.instructure.com/courses/548511/files/100268101?wrap=1>)_ 
(https://ufl.instructure.com/courses/548511/files/100268101/download?download_frd=1)
(https://ufl.instructure.com/courses/539766/files/96879118/download?download_frd=1)
- Step 4-[completed.skp](https://ufl.instructure.com/courses/548511/files/100268124?wrap=1) (<https://ufl.instructure.com/courses/548511/files/100268124?wrap=1>)_ 
(https://ufl.instructure.com/courses/548511/files/100268124/download?download_frd=1)

Your task:

- 1) Use the Assignment site plan for 3D modeling: [download the image to start](https://ufl.instructure.com/courses/548511/files/100277262?wrap=1) (<https://ufl.instructure.com/courses/548511/files/100277262?wrap=1>)
 (https://ufl.instructure.com/courses/548511/files/100277262/download?download_frd=1)



2) You need to follow the site plan shown in the images, for example, layout of buildings, tree locations and benches. However, you are free to select different pavement materials and design the building facades based on what you learnt previously.

3) You are free to expand the site plan to include the design of the surrounding environment (e.g., adding roads, trees and other blocks). If you need more components, you can find them at <https://3dwarehouse.sketchup.com/>. For example, if you need cars, search for 'cars' and sign in to download them.

[Get SketchUp](#)

[Models](#)
[Catalogs](#)
[Collections](#)
[Materials](#)

[Filters](#)
[Reset](#)

66,224 Results in Models

Relevance

car

529 KB 17,204

Joehana M.

audi tt

564 KB 9,423

linda M.

bmw serie 7 (750 li)

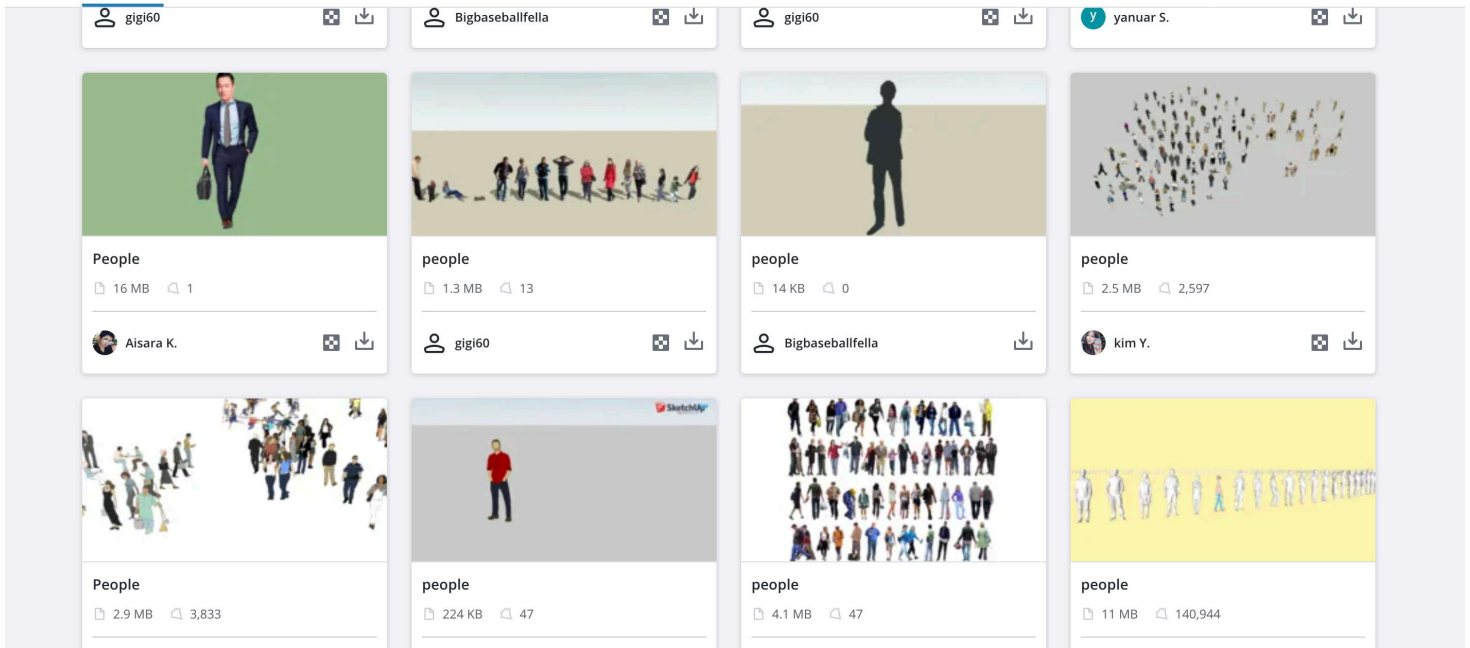
4.3 MB 79,175

António N.

Cars

9.2 MB 144,399

Hermes



Submission :

1) You need to submit your completed skp.file. 2) Please capture a few BEST 'views' of your design and submit together with your models. For example:



The rubrics

- **7 points (Excellent):** The central purpose of the student work is explicit and supporting ideas are tightly focused. Details enrich the work. The overall assignment is well organized and insightful.
- **6.5 points (Strong) :** The central purpose of the student work is clear and supporting ideas are well-developed. Details are relevant. The organization is clear with only occasional rough points.
- **5.5 points (Average):** The central purpose of the student work is clear and ideas are almost focused in a way that supports the work. Relevant details illustrate the author's ideas.
- **4.5 points (Sufficient):** The central purpose of the student work is identified, ideas are mostly focused in a way that supports the assignment.
- **3.5 points (Developing):** The purpose of the student work is close to well-defined, need ideas to support the thesis.
- **3 points (Needs improvement):** The purpose of the student work is not well-defined. A number of central ideas do not support the assignment. Thoughts appear disconnected.

The reference for the analytic rubric can be accessed from the [link \(https://teaching-resources.delta.ncsu.edu/rubric_best-practices-examples-templates/#step-5\)](https://teaching-resources.delta.ncsu.edu/rubric_best-practices-examples-templates/#step-5).

Additionally, excellent works might be exhibited in the "Discussions" section as well.

7 points

Criteria	Ratings							Pts
Description of criterion	7 pts Full Marks	6.5 pts Strong	5.5 pts Average	4.5 pts Sufficient	3.5 pts Developing	3 pts Needs improvement	0 pts No Marks	/ 7 pts

Total Points: 0

Choose a submission type

Upload

Google Drive

More



Choose a file to upload

or

 Webcam Photo

 Canvas Files



(<https://ufl.instructure.com/courses/548511/modules/items/12356129>)

Submit
Assignment



(<https://ufl.instructure.com/courses/548511/modules/items/12382200>)