

MIAMI DADE COLLEGE
WOLFSON CAMPUS

Practical Exam 2

Date: December 8, 2021

Time: 45 minutes

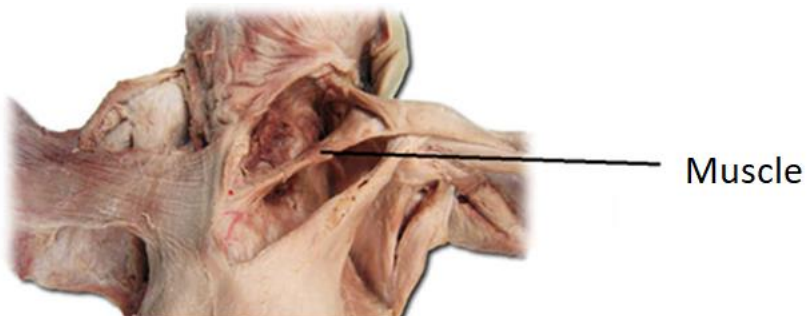
Total Points: 200

BSC2011L

20 × 10 = 200

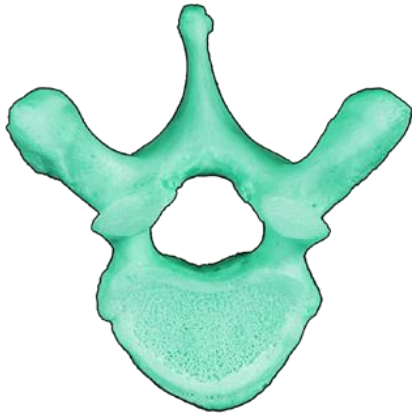
Read each question carefully then bubble the correct answer

1) Identify the muscle of the fetal pig



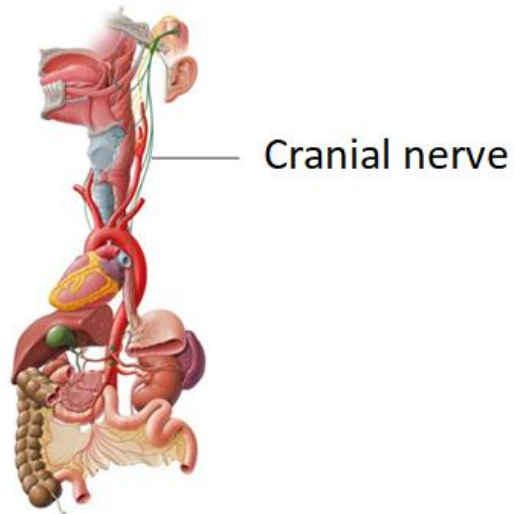
- a) Deep pectoral
- b) External oblique

2) Identify the vertebra



- a) Thoracic
- b) Coccyx

3) Identify the cranial nerve



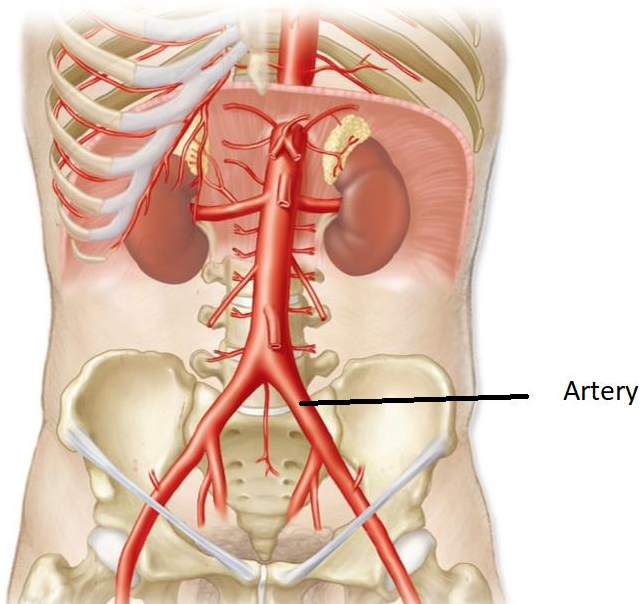
- a) Optic
- b) Vagus

4) Identify the bone



- a) Humerus
- b) Tibia

5) Identify the mammalian artery



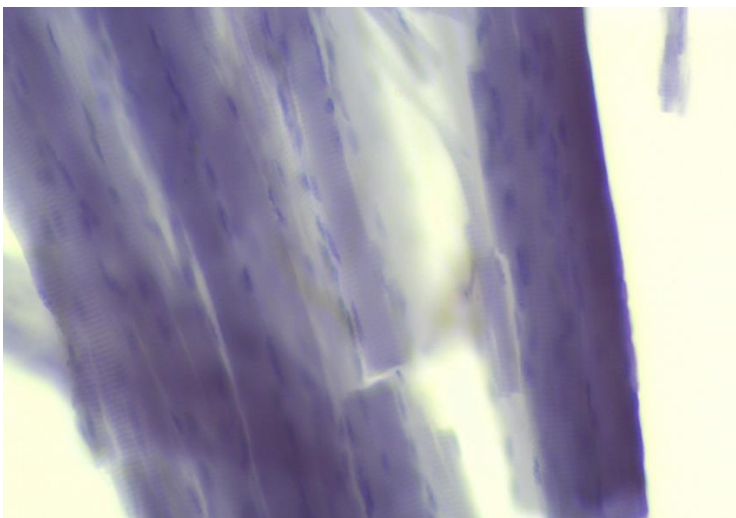
- a) Renal artery
- b) Iliac artery

6) Identify the larval stage of Fasciola hepatica.



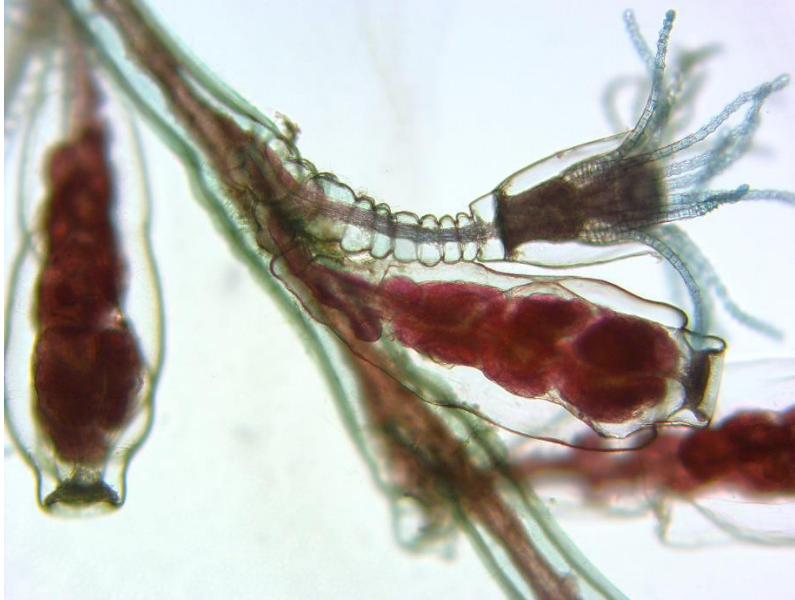
- a) Miracidium
- b) Cercaria

7) This tissue is attached to the internal organs



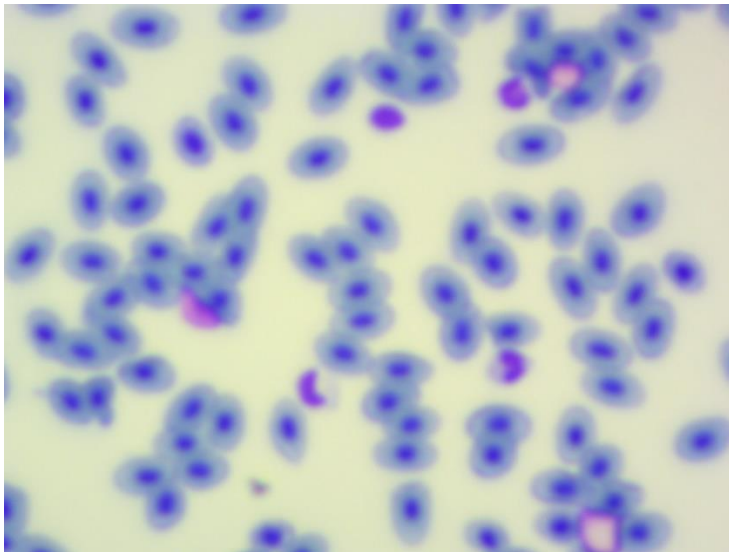
- a) True
- b) False

8) This is the medusa stage of Obelia sp



- a) True
- b) False

9) This tissue contains a solid ground substance



- a) True
- b) False

10) Which structure do clams use to feed on their prey?

a) nematocysts

b) a radula