

6RBLH

Reach-In Merchandiser

2, 3, 4 & 5-Door / 8' & 12' (Beverage / Dairy / Deli / Meat)

ELECTRICAL DATA

Doors	Fans Per Case	High Efficiency Fans	
		120 Volts	
		Amps	Watts
2-door	1	0.22	26.0
3-door	2	0.43	52.0
4-door	2	0.43	52.0
5-door	3	0.65	78.0
8'	2	0.43	52.0
12'	3	0.65	78.0

LIGHTING DATA

Doors	Door Size	LED Lighting			
		Optimax Pro		GE Immersion	
		120 Volts		120 Volts	
		Amps	Watts	Amps	Watts
2-door	30"	0.36	43.0	0.33	39.0
3-door	30"	0.53	64.0	0.48	58.0
4-door	30"	0.71	85.0	0.64	77.0
5-door	30"	0.88	106.0	0.80	96.0
8'	24"	0.73	87.0	---	---
8'	32"	0.53	64.0	0.48	58.0
12'	24"	1.08	130.0	---	---
12'	36"	0.71	85.0	0.64	77.0

ANTI-CONDENSATE DATA

Doors	Door Size	Anthony					
		101		Eliminaator		Vista-C	
		120 Volts		120 Volts		120 Volts	
		Amps	Watts	Amps	Watts	Amps	Watts
2-door	30"	1.09	110.0	0.80	96.0	1.00	120.0
3-door	30"	1.60	162.0	1.17	140.0	1.33	160.0
4-door	30"	2.11	213.0	1.53	184.0	1.72	206.0
5-door	30"	2.60	262.0	1.88	226.0	2.10	252.0
8'	24"	---	---	0.80	96.0	1.23	148.0
8'	32"	1.62	194.0	1.19	143.0	---	---
12'	24"	---	---	1.17	140.0	1.71	205.0
12'	36"	2.26	272.0	1.66	199.0	---	---

Hillphoenix

REVISION: 130701_0000

A DOVER COMPANY



Defrost Schedule	
Defrosts per Day	Time
1	12 midnight
2	12am - 12pm
3	6am - 2pm - 10pm
4	12am-6am-12pm-6pm

All measurements are taken per ASHRAE - 72 - 2005 specifications.

Hillphoenix refrigerated display cases for sale in the United States meet or exceed Department of Energy 2012 energy efficiency requirements.

6RBLH Reach-In Merchandiser

2, 3, 4 & 5-Door / 8' & 12' (Beverage / Dairy / Deli / Meat)

GUIDELINES and CONTROL SETTINGS

Application	Doors	Door Size	BTUH/door		Evaporator (°F)	Superheat Set Point @ Bulb (°F)	Discharge Air (°F)	Discharge Air Velocity (FPM) •
			Conventional	Parallel				
Beverage / Produce	2 - 5 door	30"	711	671	34	6 - 8	38	250
Beverage / Produce	8'	24"	587	554	34	6 - 8	38	250
Beverage / Produce	8'	32"	782	738	34	6 - 8	38	250
Beverage / Produce	12'	24"	590	557	34	6 - 8	38	250
Beverage / Produce	12'	36"	916	865	34	6 - 8	38	250
Deli / Dairy / Cut Produce	2 - 5 door	30"	743	701	32	6 - 8	36	250
Deli / Dairy / Cut Produce	8'	24"	619	584	32	6 - 8	36	250
Deli / Dairy / Cut Produce	8'	32"	813	768	32	6 - 8	36	250
Deli / Dairy / Cut Produce	12'	24"	622	587	32	6 - 8	36	250
Deli / Dairy / Cut Produce	12'	36"	948	895	32	6 - 8	36	250
Meat	2 - 5 door	30"	806	761	28	6 - 8	32	250
Meat	8'	24"	663	627	28	6 - 8	32	250
Meat	8'	32"	884	835	28	6 - 8	32	250
Meat	12'	24"	666	629	28	6 - 8	32	250
Meat	12'	36"	1031	974	28	6 - 8	32	250

DEFROST CONTROLS

Defrosts Per Day	Timed-Off Defrost	
	Fail-Safe (Min)	Termination Temp (°F)
4	30	47

NOTES:

- 8-foot cases can consist of 3 (32") doors or 4 (24") doors; 12-foot cases can consist of 4 (36") doors or 6 (24") doors.
- Data listed for Optimax Pro lighting represent the low power option. High power lights are also available.
- NOTE: "- -" indicates that feature is not an option on this case model.
- Anti-condensate heat values for Eliminaator and Vista C represent a door with no heat on the glass.
- Listed discharge air velocity represents the average velocity at the peak of defrost.
- Temperature and defrost settings listed above are recommended start-up settings. Final operational settings may need to be adjusted for the store conditions in which the case operates.
- The recommended evaporator temperatures may need to be adjusted based on system setup, store conditions, etc. The minimum recommended evaporator temperature is 4°F below the listed evaporator temperature.

Hillphoenix
REVISION: 130701_0000

A DOVER COMPANY



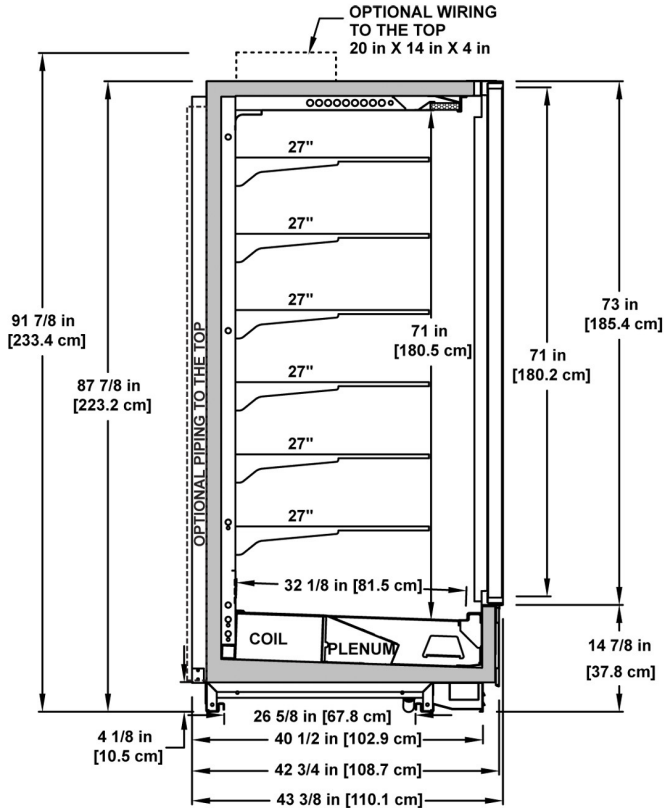
COMPONENT

Defrost Schedule	
Defrosts per Day	Time
1	12 midnight
2	12am - 12pm
3	6am - 2pm - 10pm
4	12am-6am-12pm-6pm

All measurements are taken per ASHRAE - 72 - 2005 specifications.
Hillphoenix refrigerated display cases for sale in the United States meet or exceed Department of Energy 2012 energy efficiency requirements.

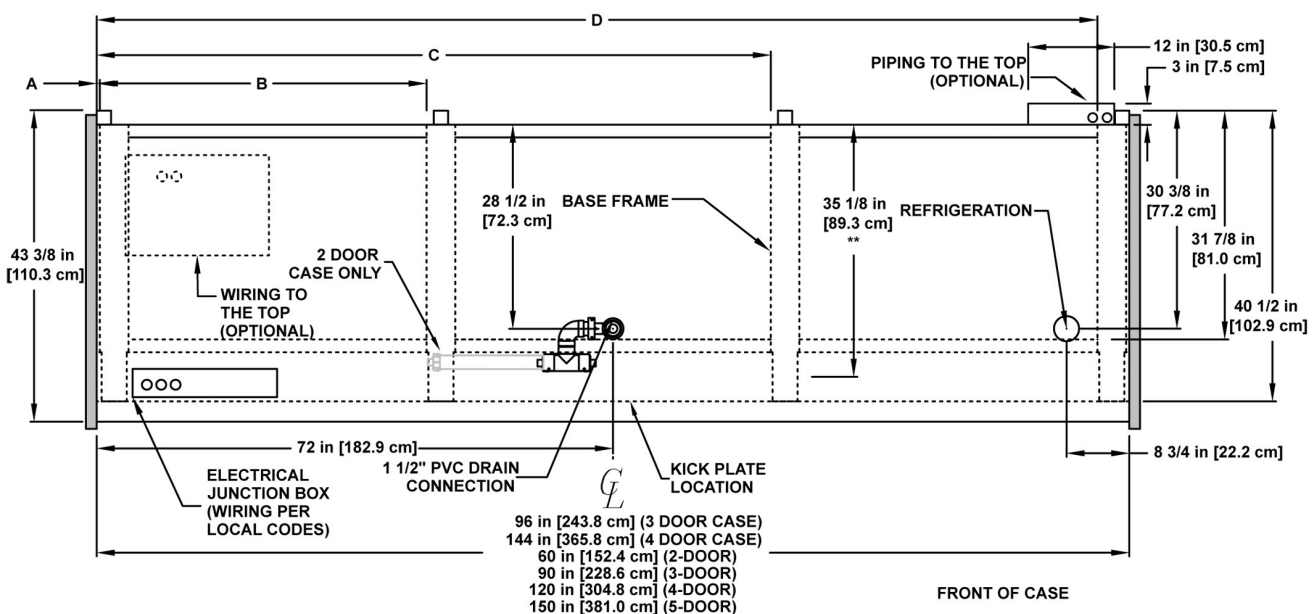
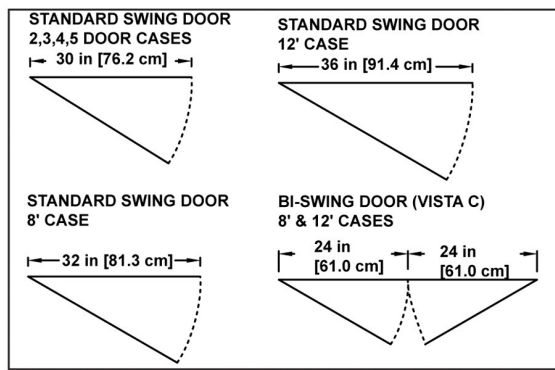
6RBLH Reach-In Merchandiser

2, 3, 4 & 5-Door / 8' & 12' (Beverage / Dairy / Deli / Meat)



6RBLH Case Length	Doors	A	B	C	D	E
60"	2	3/8"	28"	55 1/2"		
90"	3	3/8"	28"	58"	85 1/2"	
120"	4	3/8"	28"	58"	88"	115 1/2"
150"	5	3/8"	28"	88"	118"	145 1/2"
96"	8ft	3/8"	54"	91 5/8"		
144"	12ft	3/8"	46"	94"	139 1/2"	

* Riser Support



NOTES:

- * : STUB-UP AREA
- ** : RECOMMENDED STUB-UP CENTERLINE FOR ELECTRICAL AND HUB DRAINS
- ENDS ADD APPROXIMATELY 1" TO CASE HEIGHT
- WIRING TO THE TOP ADDS APPROXIMATELY 4" TO CASE HEIGHT
- A 2" MINIMUM AIR GAP IS REQUIRED BETWEEN THE REAR OF THE CASE AND A WALL
- BACK PANELS ADD APPROXIMATELY 1" TO THE REAR OF THE CASE
- SUCTION LINE (ALL LENGTHS) - 1/2"
- LIQUID LINE (ALL LENGTHS) - 3/8", LIQUID LINE w/HOT GAS DEFROST (ALL LENGTHS) - 1/2"
- AVAILABLE SHELF SIZES: WIRE SHELVES 16", 18", 20", 22" & 23 1/2"
- SOLID SHELVES 18", 20", 22", 24, & 27"

